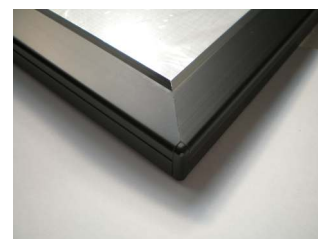
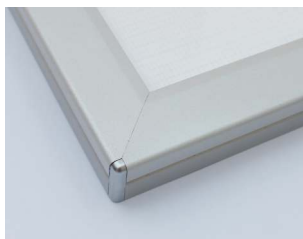
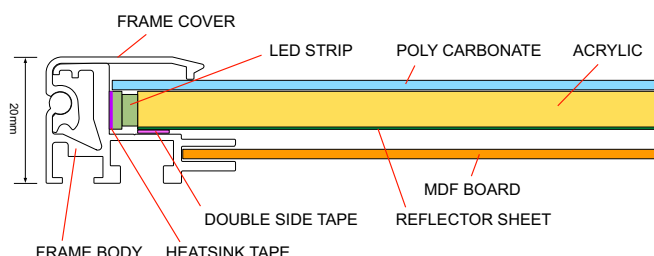


'Diamond' Ultra Slim LED Light Boxes

20mm or 16mm deep Edge Lit light box with 25mm snap frame front



Our 'Diamond' LED boxes are 20mm or 16mm deep with a 25mm aluminium snap frame front for quick and easy graphic changes. Brilliant illumination is generated by the 24v high brightness 3 chip LED's, that edge light the optically clear, CNC engraved Acrylic with an individually graduated grid. This produces corner to corner shadow free illumination across the face, whatever the size.

The 'Diamond' is available in A4, A3, A2, A1 and A0 sizes in Silver anodised finish as standard with White or Black frames to order. This 24v light box can be manufactured in any size up to 3000 x 1500mm, are long life & maintenance free.

- 20mm or NEW 16mm deep option
- 25mm snap frame front
- Single and Double sided
- Bespoke sizes up to 3000 x 1500mm
- Silver-Black Anod/Black Gloss/White
- CNC Grid cut edge lighting technology
- 12V or 24V High Bright LED illumination
- Various colour temperatures
- Corner inserts for safety
- Clear front protection sheet
- Pre-drilled for concealed wall fixing
- Delivery 2-3 weeks for custom made.

	OVERALL	GRAPHIC	VISIBLE
A4	233 x 320	210 x 297	183 x 270
A3	320 x 443	297 x 420	270 x 393
A2	443 x 617	420 x 594	393 x 567
A1	617 x 864	594 x 841	567 x 814
A0	864 x 1212	841 x 1189	814 x 1162



Ways2display Limited
 Britannia House, 29 Station Road
 Kettering, Northants, NN15 7HJ England
 Telephone: 0333 123 0345
 email: sales@ways2display.com | sales@artillus.com
 web: www.ways2display.com | www.artillus.com

